

Проект на тему
"Незвична розмова
про звичні факти з
життя на планеті
Земля"
(на англійській
мові)

Which of the things below do not produce energy?

- jellyfish
- milk
- natural gas
- sugar
- sun
- wind

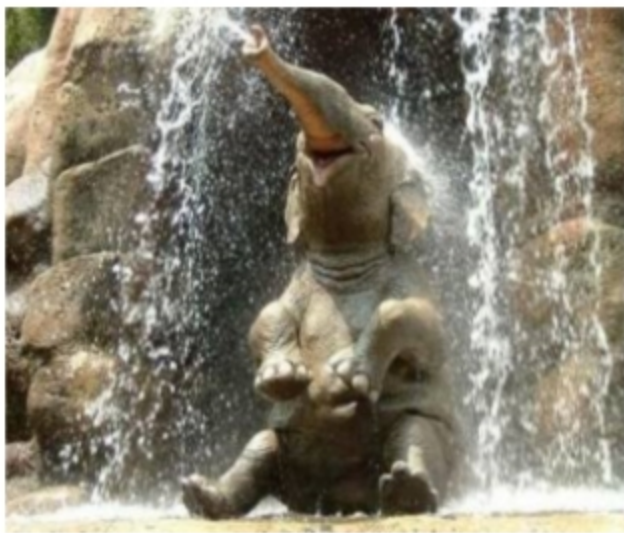
New power for the Zoo.

Elephant energy

Did you know that you heat a building with animal waste? At school, I heard about a local zoo that had tried it, so I went to see for myself. When I got there, the zoo-keeper had just given the elephants some food. He told us that they've got there got huge appetites and can eat 100 kilos of fruit and vegetables every day! Over the previous week, he had collected a container of waste from all the plant-eating animals in the zoo. I hadn't realised what a mountain of animal waste looked like! The mixture of animal waste and water produces a biogas. This goes into an engine that works on gas and produces electricity.

So, had this idea really helped the zoo? Absolutely!
Before they started using the waste, the zoo had found it difficult to control how much they spent on electricity. Now they can keep the animals warm and save money too!

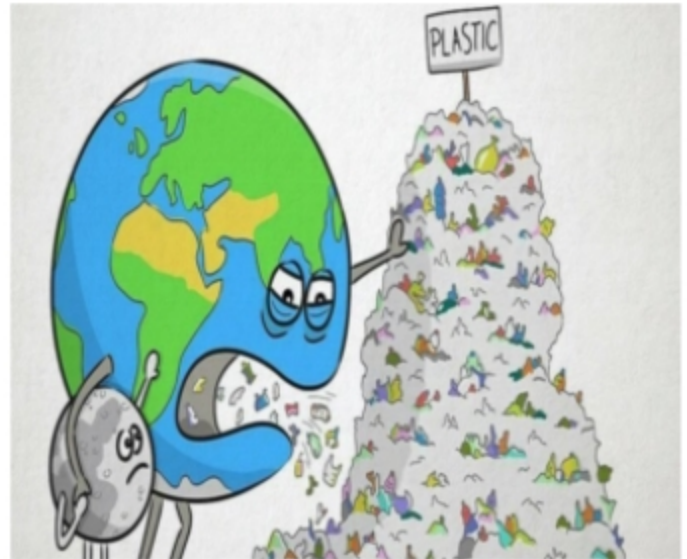




What do you know about the problem of pollution?

1. What is the biggest cause of air pollution?
2. Why do chemicals used to kill insects cause soil pollution?
3. How do some industries pollute water?
4. In cities, what kinds of noise pollution are there?
5. What are the sources of light pollution?

Follow the rubbish route!





Match the parts of the word combinations

- to protect
- to reuse
- to reduce
- to recycle
- to pollute
- to stop
- things
- endangered animals
- rivers and lakes
- global warming
- rubbish
- air pollution

Nobody really knows for sure how fast the planet is heating up. Experts do know, however, that if we don't do anything about it, the problem will continue to get worse. If you use less energy, you'll help slow down global warming. If you want to use less energy, turn off lights when you leave a room; use air conditioners wisely; take shorter showers; turn off a TV set when you go out.

Global warming may have negative results



The polar bear

The polar bear is of eight different species of bears. Its habitat is the ice and water near the Arctic Circle. The bear is a predator that eats other animals. It usually preys on other Arctic animals such as seals. Bears prey for their food during the day. The polar bear is a habitat and found in the north of Canada. Polar bears are vulnerable, and there are not many of them left. Their species is becoming smaller. At least three of the nineteen polar bear's populations are currently decreasing in number. If we don't hunt these bears, they will become extinct.



What new have you learned about the life of polar bears?



<https://www.youtube.com/watch?v=HmnKbBmYii8>

Animals are our
smaller brothers



Shark therapy

Tanya Streeter is a world-famous diver, but she's got one big problem. She's afraid of sharks! To overcome her fear, she needs help or "therapy" and travels to the Bahamas to get it. Here, she learns how to swim with and comes face-of-face with a dangerous tiger shark.



https://www.youtube.com/watch?v=3FZfmXI_7ps

Watch the video again and choose the correct option.

B Watch the DVD. Underline the correct alternatives.

- 1 It's safer to wear a *black/green/shiny* swimsuit.
- 2 Tanya uses a *knife/stick/gun* to protect herself from the sharks.
- 3 *No/One/Two* shark(s) try to bite Tanya.

C Look at the programme extracts below. Watch the DVD again and correct the mistakes.

- 1 'At first, it isn't ~~difficult~~.' easy
- 2 'I didn't think that they were going to be ... quite so ... friendly.'
- 3 'I noticed the mask and I think we should change the mask completely.'
- 4 'Jim throws meat into the water to attract the sharks.'
- 5 'Tanya, look behind you over on your right.'
- 6 'That was frightening! Tanya did great.'
- 7 'I've started to overcome my very real feeling.'

D Work in pairs and answer the questions.

- 1 At the end of the programme do you think



Can you send postcards from Antarctic?



<https://www.youtube.com/watch?v=GKtZB3Oj1Kk>

The Penguin Post Office

Antarctica's most popular tourist destination is a unique British post office located in the heart of the Antarctic Peninsula at Port Lockroy, about 700 miles south of Argentina and Chile. Enthusiastic cruise ship passengers from around the world come ashore throughout the Antarctic summer to see the colony of 3,000 gentoo penguins that takes up residence each year alongside Port Lockroy's other summer inhabitants – the post office staff.

Penguin Post Office follows the daily lives of the gentoos as they find their mates, build their nests and raise their young. Also featured are interviews with members of the small group of volunteers from the United Kingdom Antarctic Heritage Trust who run the remote British outpost. Hearty enthusiasts themselves, they ready the post office, gift shop and on-site museum to welcome the thousands of visitors who will arrive over the course of the four-month-long tourist season. At the height of summer, Port Lockroy averages two ship visits a day.

You can buy T-shirts, cups, toys and lots of other things. Tourists happily take shot after shot of the dramatic scenery and of the gentoo colony. The penguins always appear happy to pose for photographs, provided that tourists and their cameras get no closer than 15 feet, which seems to be their limit for paparazzi. Then it's on to the museum dedicated to Port Lockroy's unique history as a British research center, and to the gift shop for penguin-themed mementoes, gifts and postcards to send to friends and family, and sometimes to themselves. The postcards go all around the world.



Watch the video again and choose the correct option.

1. Antarctica is 700 / 7000 miles from Argentina.
2. There are a lot of Gentoo / Emperor penguins here.
3. 18,000 / 3,000 penguins live here.
4. The visitors can buy coats / T-shirts.
5. The postcards go to the UK only / all countries.